

Virtual Computer Class- Working with Client

General explanation

The virtual computer classes were established in order to give the students and the academic faculty of the university of Haifa, a comfortable working environment where they can teach and practice through unique software.

The frontal lessons will continue to take place via Zoom, whereas the practice will take place in the virtual computer class.

1. Working with VMware Horizon Client

Installing VMware Horizon Client on your personal computer is a one-time operation and allows for a better working experience.

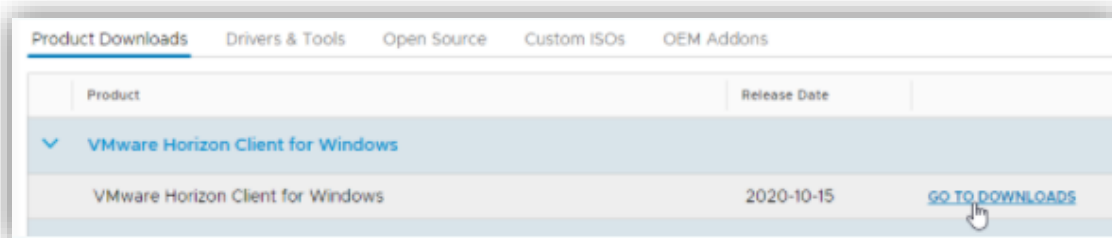
Please choose the suitable client for the operating system installed on your computer.

Installation and working with the Client on your PC

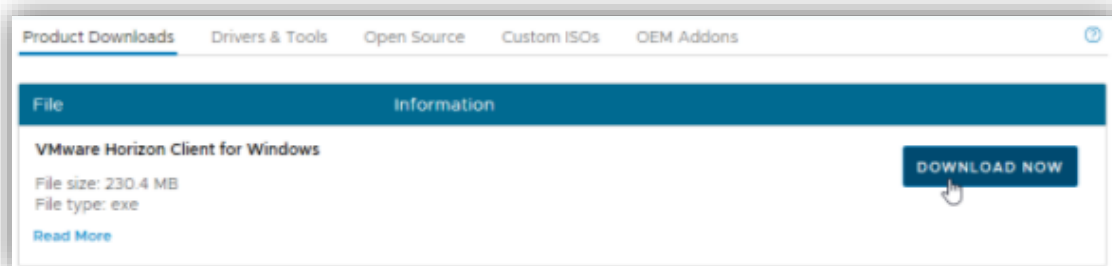
To download the suitable client for your operating system, go to

[Download VMware Horizon Clients](#)

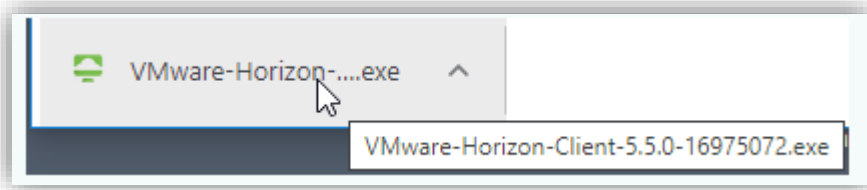
Select your operating system and click GO TO DOWNLOADS.



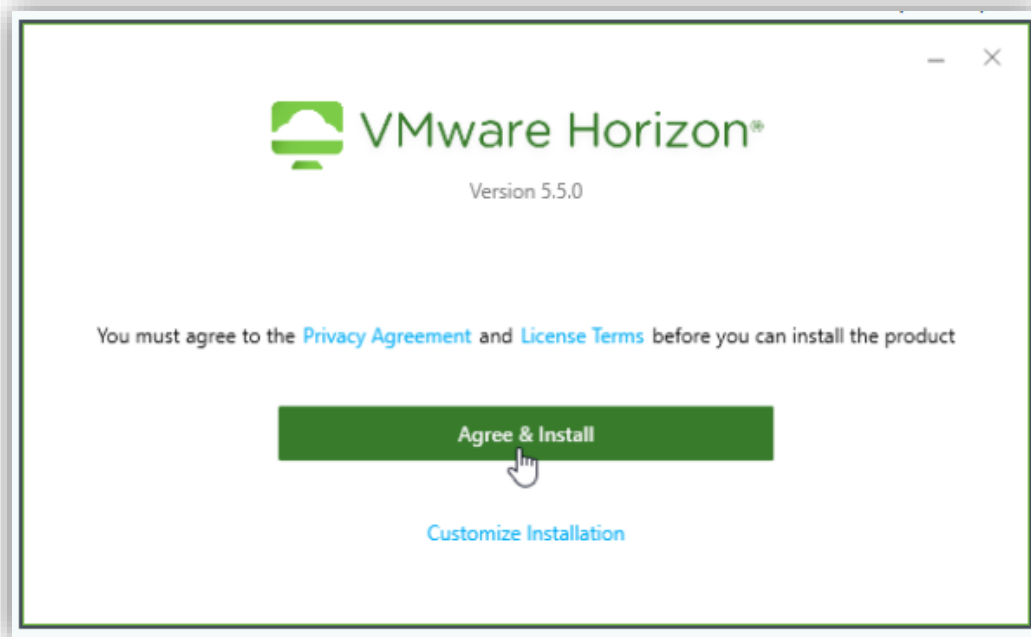
a. In the window that will open, click on DOWNLOAD NOW:



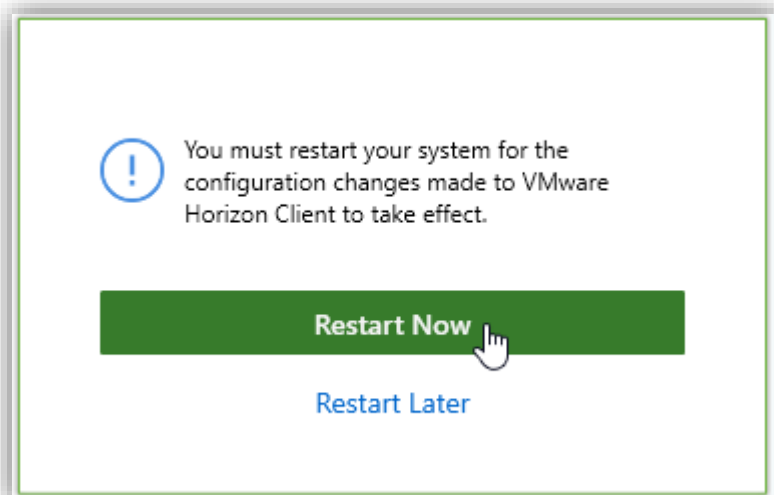
- b. When you have download is finished, click on the installation file (usually at the bottom of the browser):



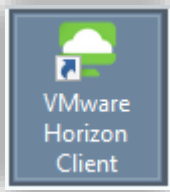
- c. The installation process will begin



- d. At the end of the installation you will be asked to restart the computer

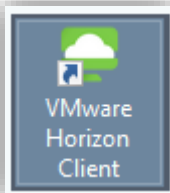


- e. After the computer starts up, a new icon will be added to your desktop



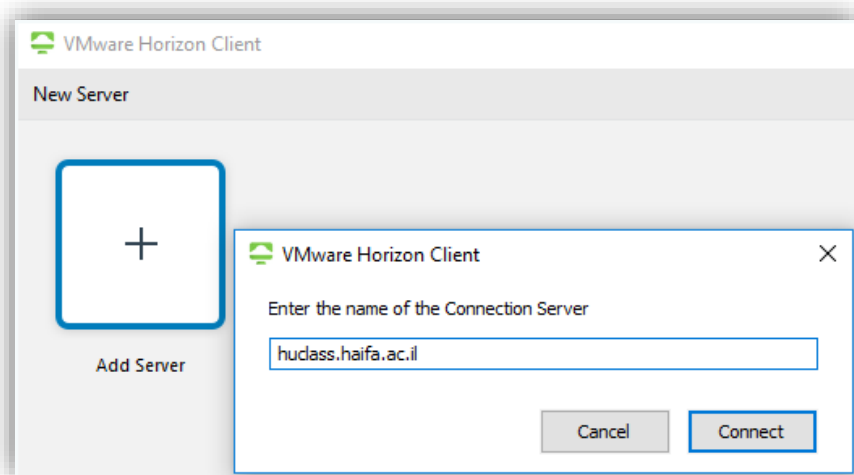
Setting up the class server (one-time operation)

- a. Double-click the VMware Horizon Client Icon on your desktop

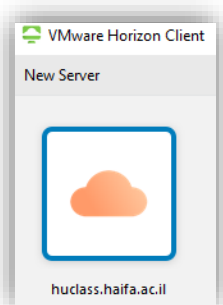


- b. In the window that will open, double-click on the "+" Add Server and enter the following address:

Huclass.haifa.ac.il then Connect



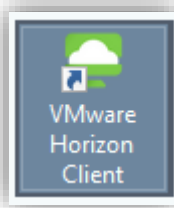
- c. Now, a VMware Horizon Client window will look like this:



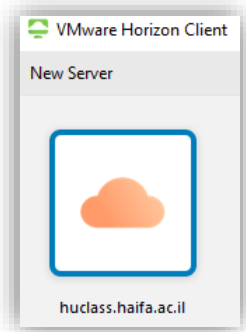
Logging in to a computer station in the virtual classroom

After installation (steps 1 and 2) make sure that the computer is connected to the Internet.

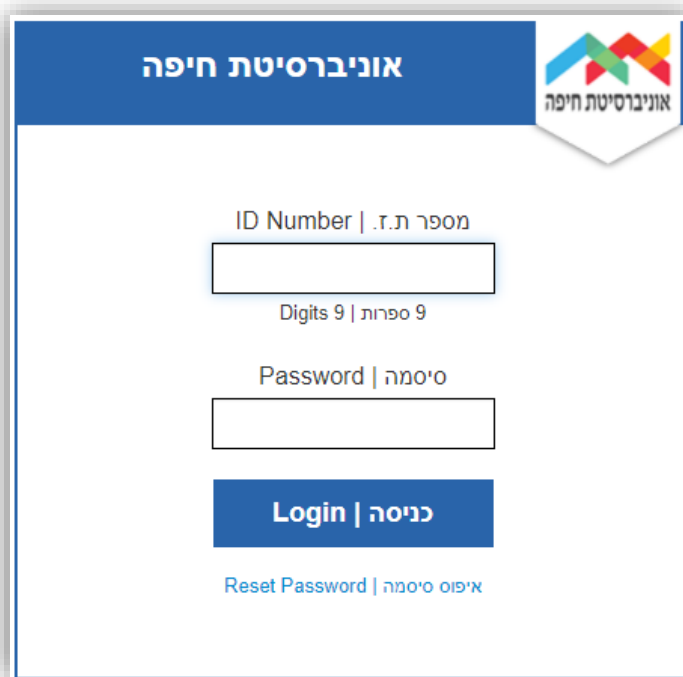
- a. Double-click the VMware Horizon Client Icon



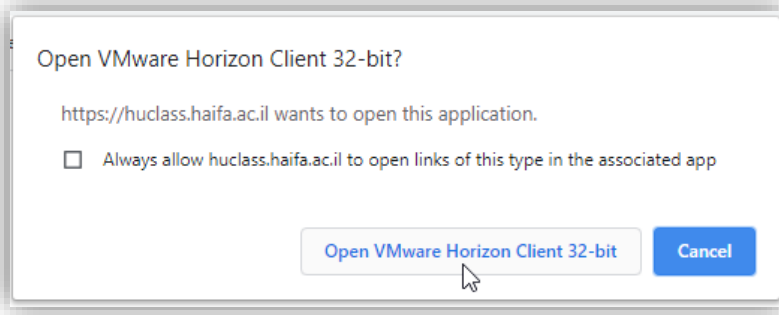
- b. Double click the class server



- c. Enter your SSO information and (same as Moodle and the student portal).

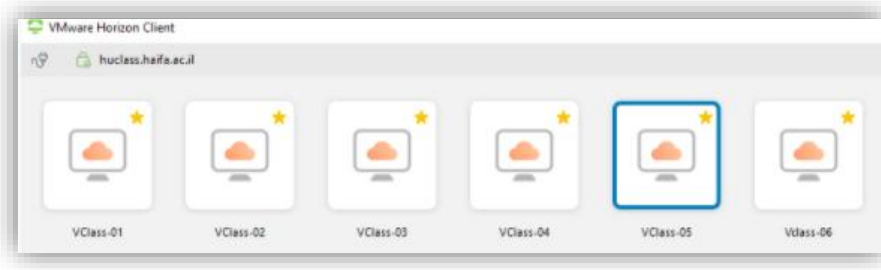
The image shows the login page for the University of Haifa. The page has a blue header with the text "אוניברסיטת חיפה" (University of Haifa) and the university's logo. Below the header, there are two input fields: the first is labeled "ID Number | מספר ת.ז." (ID Number | ID Number) and the second is labeled "Password | סיסמה" (Password | Password). Below the input fields, there is a blue button labeled "Login | כניסה" (Login | Login). At the bottom, there is a link labeled "Reset Password | איפוס סיסמה" (Reset Password | Reset Password).

- d. After identifying, you will receive a window to open the list of virtual classes



e. The list of virtual classes is now displayed.

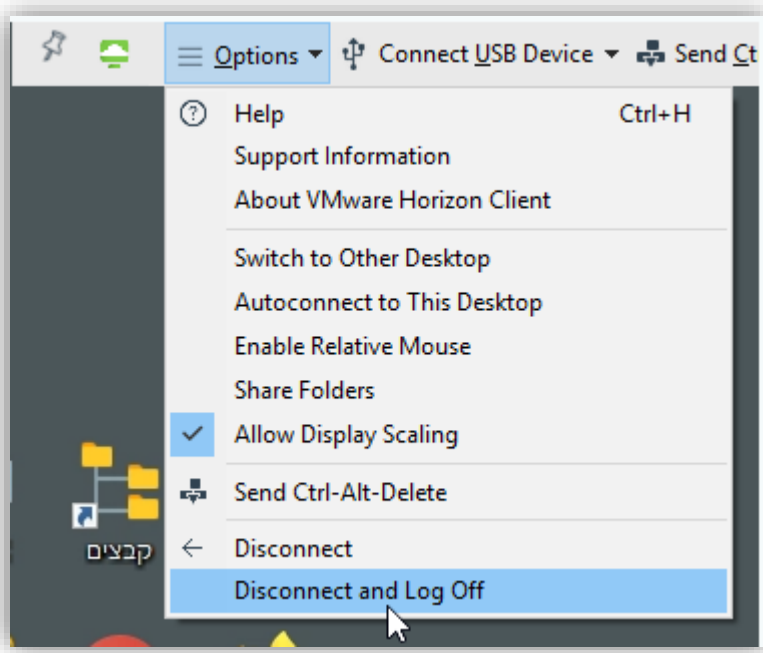
Select the class according to the placement you received.



Disconnecting from the virtual server and classroom

To disconnect the, click on **Disconnect and Log Off**.

In the top toolbar ==> Options ==> Disconnect and Log Off

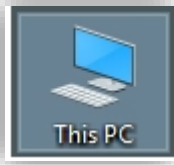


Emphasis for working with VMware Horizon Client

File Transfer

Working with the Client allows you to transfer files from your personal computer to the virtual station and vice versa.

On the desktop of the virtual machine, click on the icon



In the window that will open, under Network Locations

==> You will find your personal computer drive.

! This does not exist while working with a browser

- **Class placements, availability and getting ready for the lesson.**

[Class placements in the virtual environment](#)

Class availability –

Sunday – Thursday from 07:30 to 21:00 ->

Logging in and using the virtual computers is only allowed for the students in the classes that have been assigned.

You are prohibited from entering at times where the lesson is not taking place.

Everyday starting at 21:00 until 07:30 the following day as well as Friday and Saturday ->

The virtual computer classes are free for self-practice.

2. Important things to know

- **Getting the class ready for starting the lesson:**

To prepare the virtual class for the next group \ lesson, all of the virtual computers in the classroom will be automatically shutdown 10 minutes prior to the time the lesson ends.

All of the data that has not been saved will be deleted!

For example:

If you are assigned to a lesson between 10:00 – 14:00, you can log in at 10:00 and at 13:50 you will be automatically logged out and all the data that has not been saved will be deleted.

It is very important to save your data before logging out.

- **Losing data and information after disconnecting**

Attention! After disconnecting from the session, all of the data will be deleted and cannot be restored. The computer will go back to its initial settings.

3. Support and assistance

- If you are having trouble connecting to the classroom **before or during a lesson**, please write a WHATSAPP message to this number, calls will not be answered.



052-869-98-37

- [Contact the student's help desk](#)
- [Students help center](#)